

Welcome to

Kids Around Dogs!



www.abispawfectpals.com

 07545 968135

Hello! I'm Abi.



Former Deputy Head teacher with 25 years teaching experience

Fully qualified Pet First Aid instructor

Kids Around Dogs Approved Professional

Dog Mum!



www.abispawfectpals.com

 07545 968135



Parker & Willow



Cleo



Kids Around Dogs!







- Keeping children and dogs safe**
- When and where to touch or not**
- Understanding dog body language and teaching children this**
- Safe, fun ways for children and dogs to interact**



The statistics ...



-  **8 - 9000 hospital admissions for child-dog related injuries annually.**
-  **Children under 9 most affected, especially toddlers.**
-  **Most injuries affect head or face.**
-  **75 - 80% of incidents occur in the home with known, familiar dogs.**



Safety for all

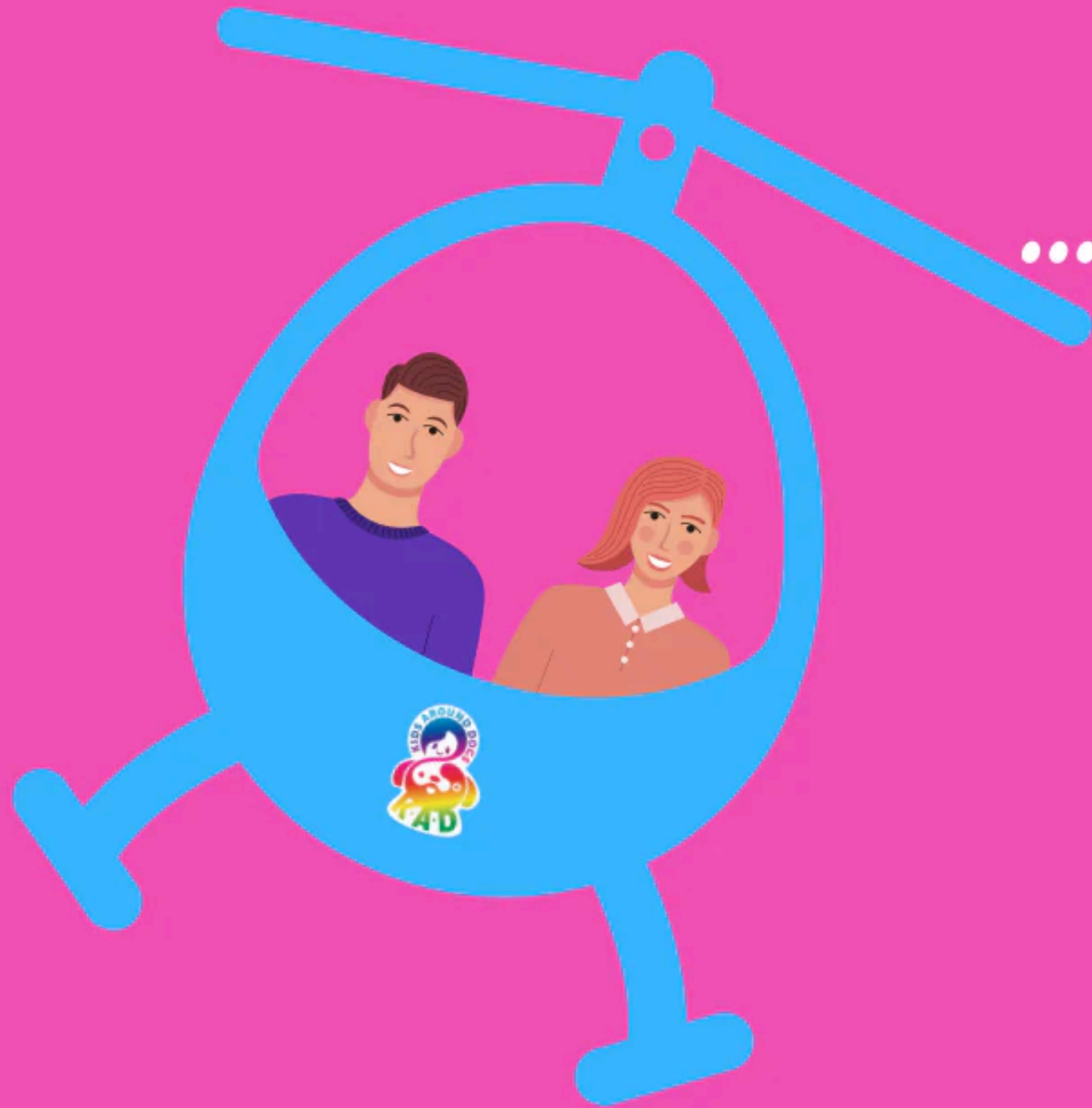


- ACTIVE supervision. Be a helicopter parent!**
- Children copy everything! Be mindful of your interactions.**
- Safe zones.**
- Clear rules.**



WHEN IT COMES TO KIDS AROUND DOGS...

....BE A HELICOPTER PARENT!



www.kidsarounddogs.co.uk
@kadjkidsarounddogs



www.abispawfectpals.com

 07545 968135

Rules

Non-negotiable!



Don't run around or jump about near a dog. Do let the dog sniff you.

**Don't approach dogs on the lead.
Do ask the owner for permission for petting.**

**Don't touch dogs while they are eating.
Do wait for a dog to finish eating before asking them to come to you.**

**Don't touch a dog whilst it is sleeping.
Do wait for the dog to wake up naturally.**



Rules

Non-negotiable!



Don't take toys or food away from a dog, even if they are yours.
Do call an adult to help you.

Don't hug dogs, sit, stand or lay on them. Do sit or stand NEXT to them.

Don't pull a dog's tails or ears and don't poke their eyes.
Do respect a dog's space and body.

Don't tease a dog by holding a toy or food over their head.
Do throw the toy or food onto the floor for the dog to get.



Where to pet your dog



1 THE HEAD

The majority of dogs do not like us touching the top of their head.

2 THE BACK

This is a nice place to have 'scratches' and 'strokes'. Always move your hand away after a short time to see if the dog still wants you to continue.

3 THE TAIL

The majority of dogs do not like us touching their tails'.

4 THE TUMMY

This is for family only. If you are unfamiliar to the dog, we do not advise you touch the dog's tummy.

5 THE LEGS AND PAWS

A lot of dogs do not like you touching their legs or paws.

6 THE CHIN AND CHEST

This is a nice place to have 'gentle strokes'. Always move your hand away after a short time to see if the dog still wants you to continue.



www.kidsarounddogs.co.uk



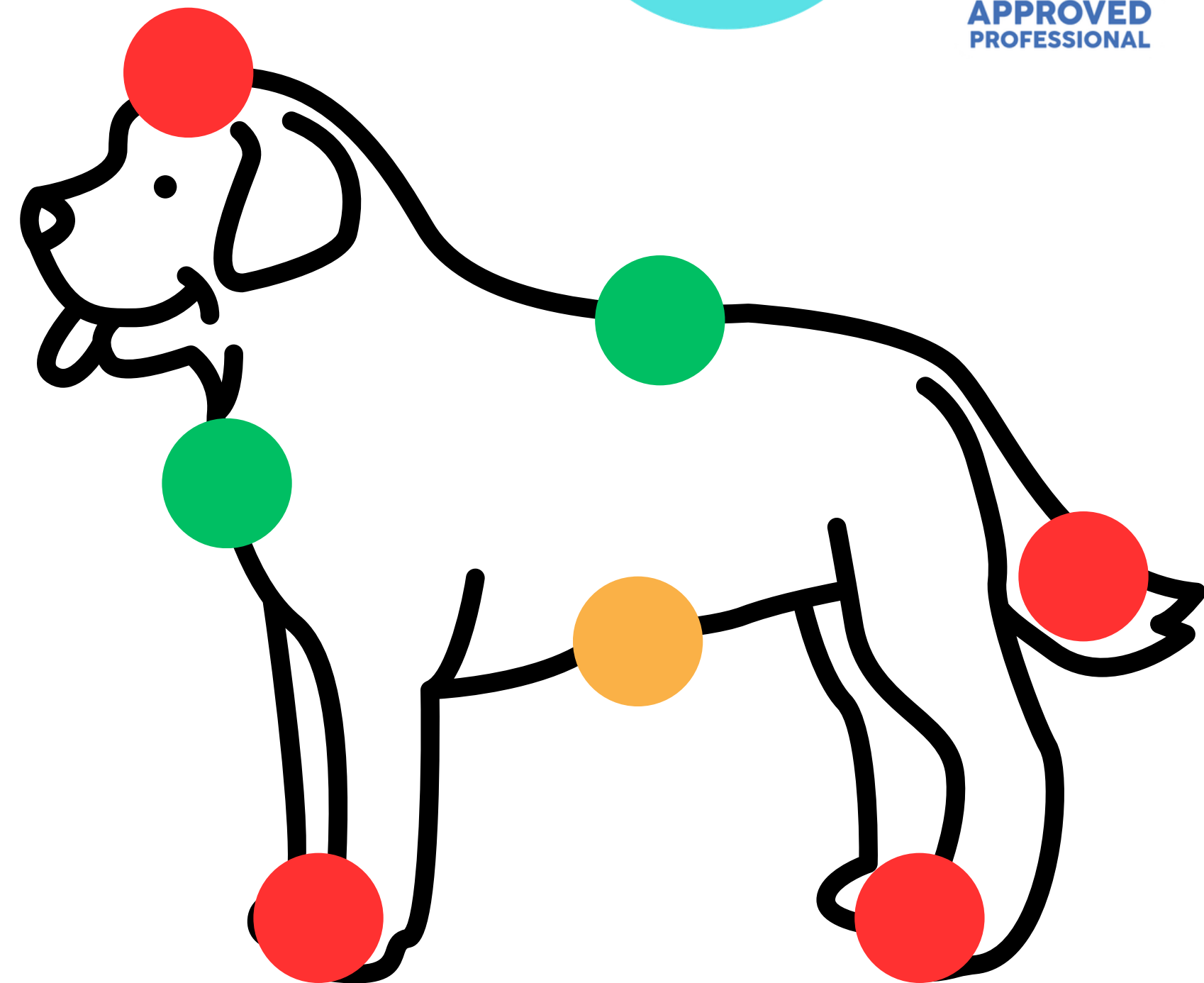
BeKind Rescue

www.bekindrescue.com



www.abispawfectpals.com

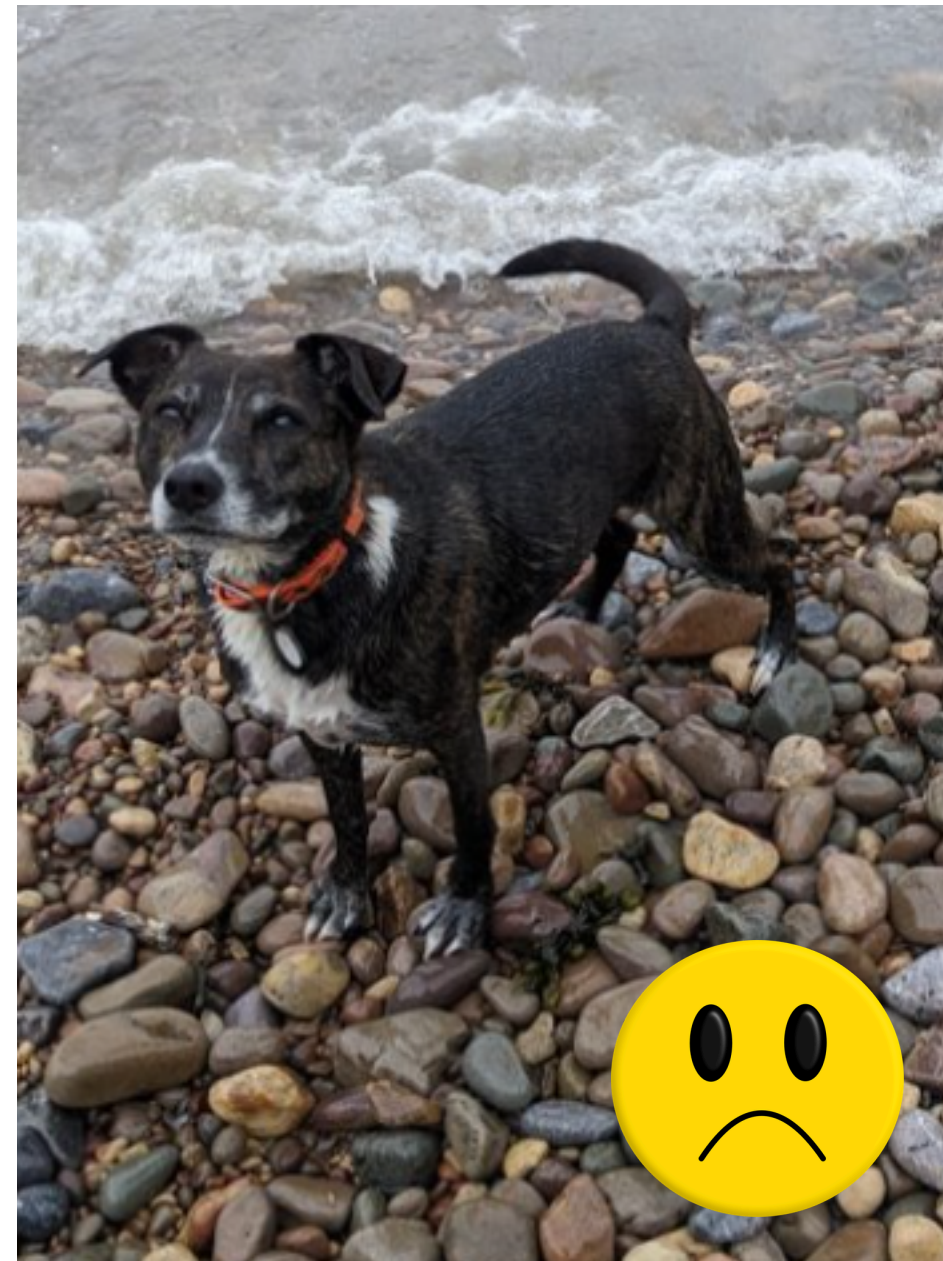
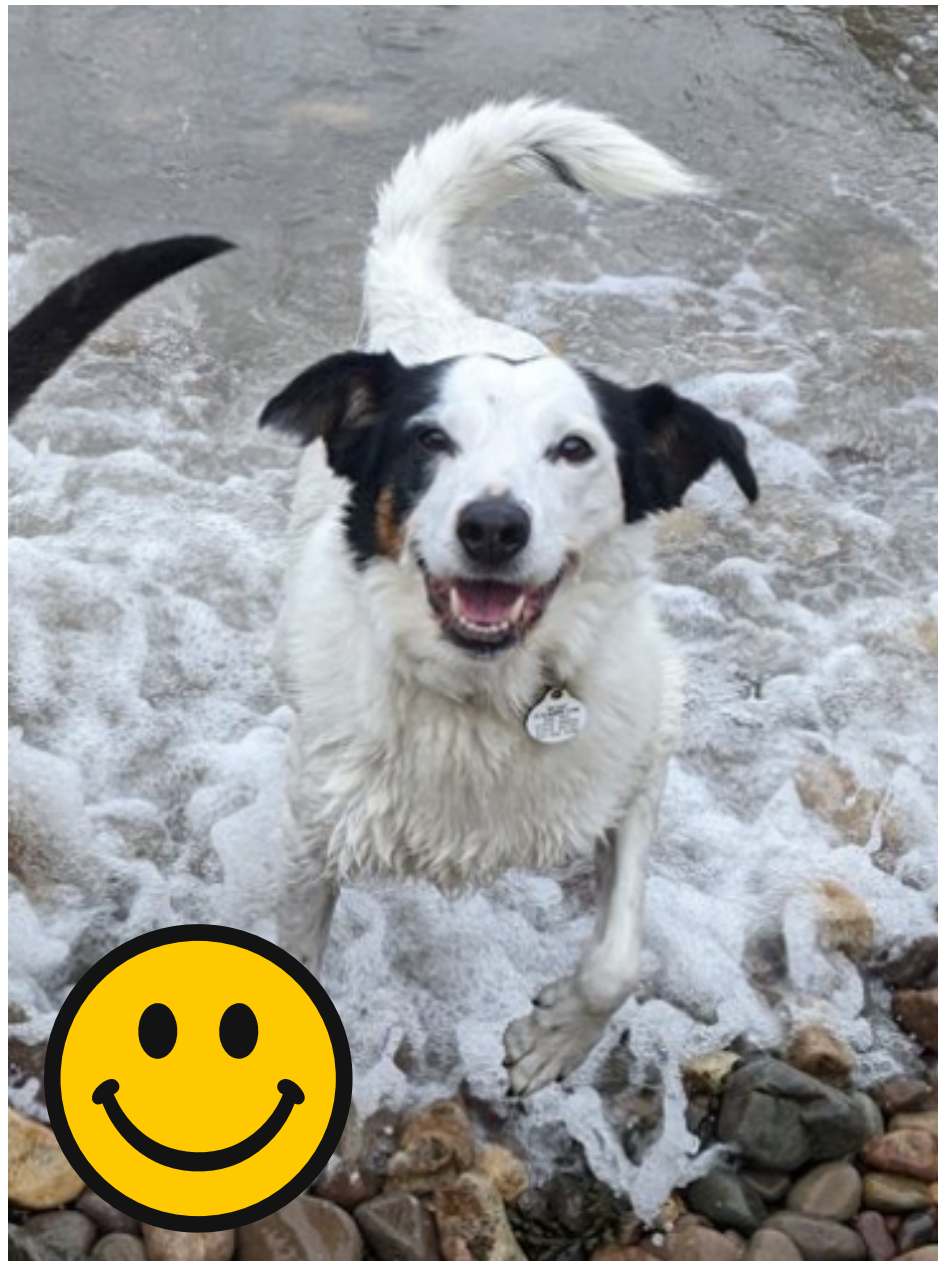
 07545 968135



www.abispawfectpals.com

07545 968135

Body language



MOUTH

OPEN

CLOSED



Body language



EAR

UP/RELAXED

DOWN/CLOSE TO HEAD



Body language



TAIL

UP & SOFT WAGS

THINKING

TUCKED UNDER



STRESS SIGNALS



LIP LICKING



YAWNING



WHALE EYES



DISPLACEMENT BEHAVIOURS



SHAKING OFF



SCRATCHING

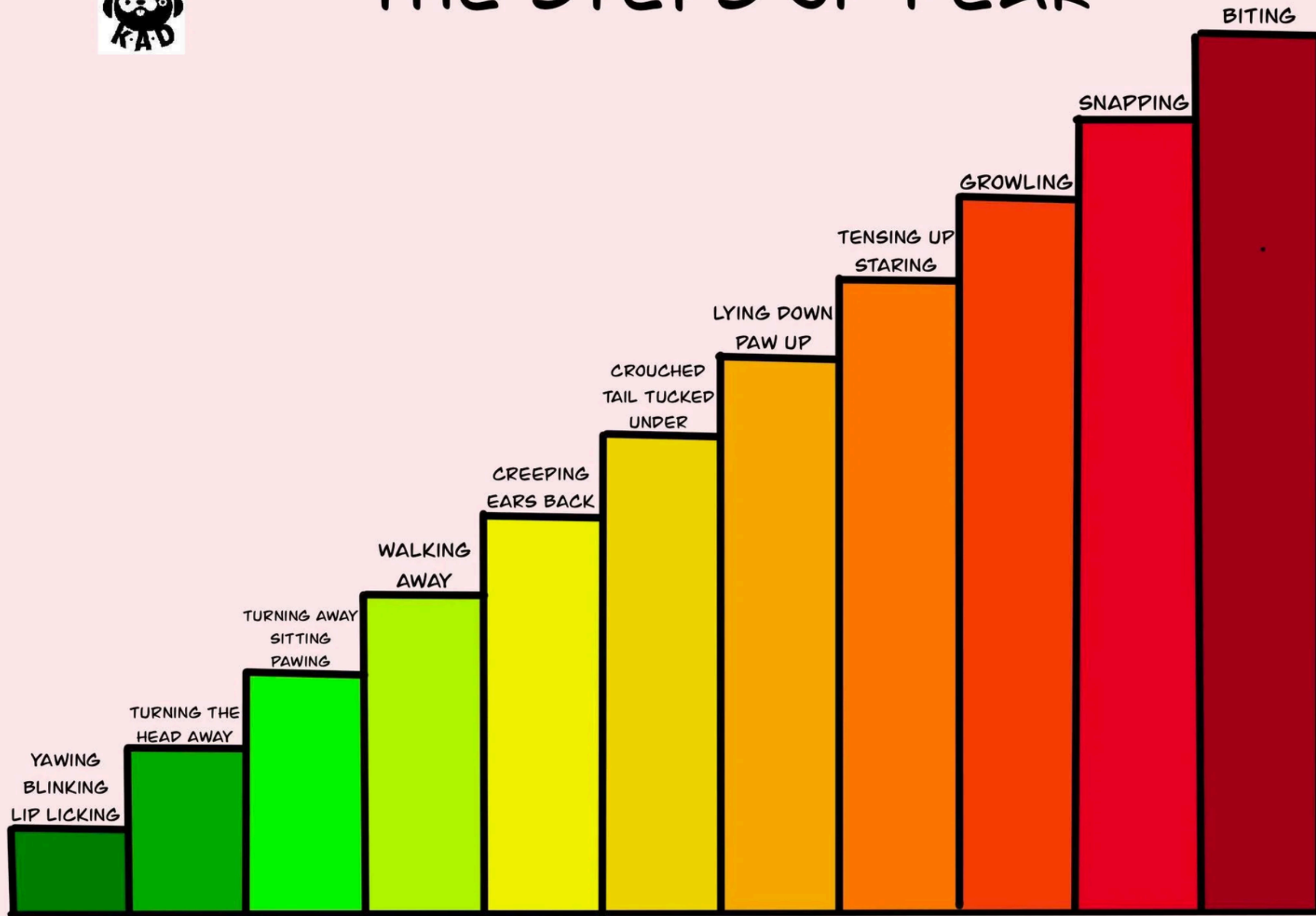


SNIFFING





THE STEPS OF FEAR



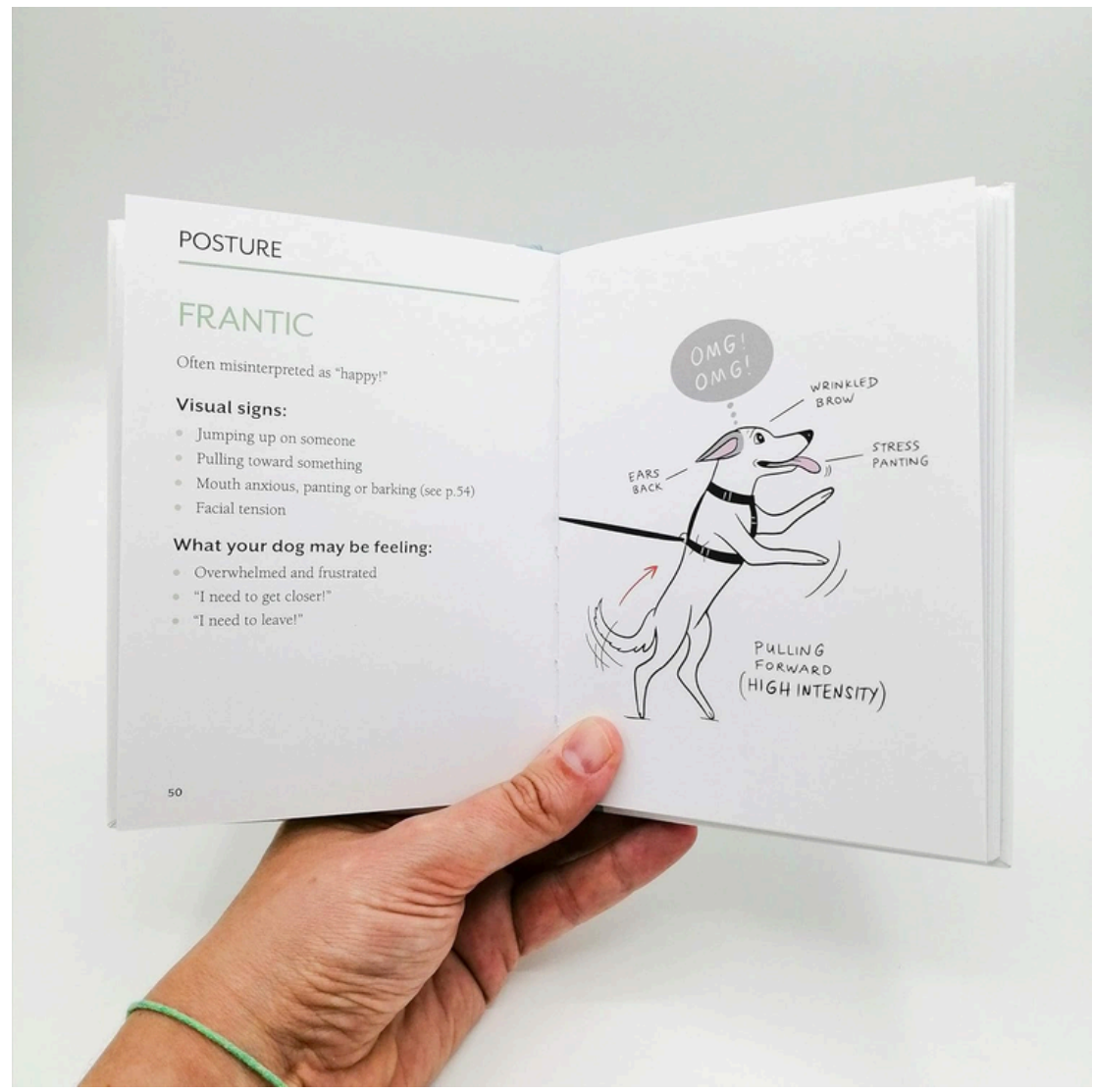
RECOMMENDED READING



DOGGIE *Language*

A DOG LOVER'S GUIDE TO
UNDERSTANDING YOUR BEST FRIEND

LILI CHIN



www.abispawfectpals.com

07545 968135

Safe, fun activities



IKEA resources



Puzzle toys





Sniffing games



Licky painting



Enrichment box





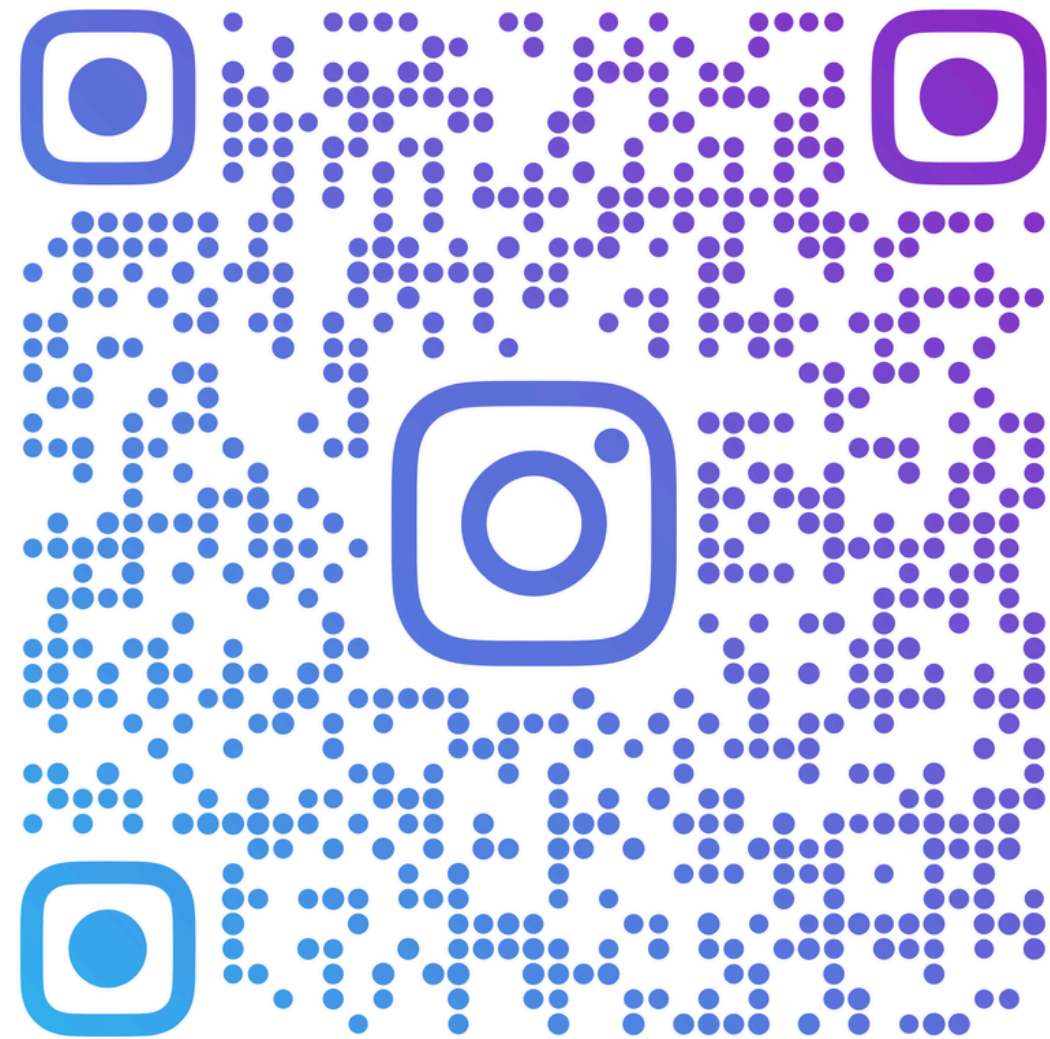
**Any
questions?**



www.abispawfectpals.com

07545 968135

Please give me a follow!



ABIS.PAWFECT.PALS



www.abispawfectpals.com

 07545 968135